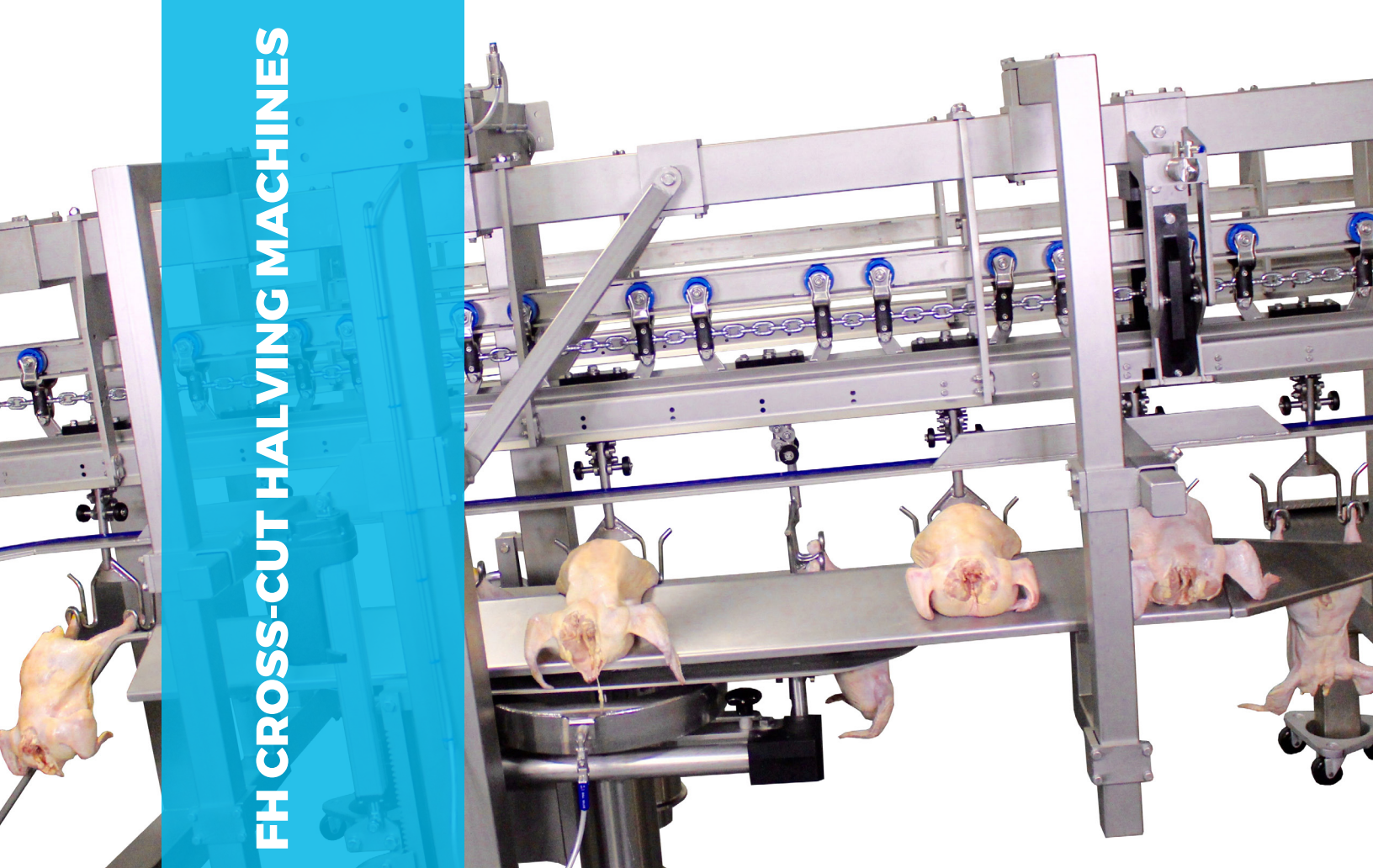


FH CROSS-CUT HALVING MACHINES



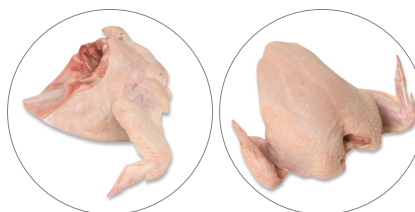
This module addresses challenges commonly found with single bladed front halving machines. The FH Cross-Cut Halving Machine provides a highly efficient cross-cut front half, significantly reducing the amount of tipped keels and miscuts. Using two blades instead of one large blade gives a straighter cut across the hips and gives more control over the number of ribs that stay attached to the front half.

The FH Cross-Cut can run both on 12" and 8" centers, and it can process a large size variation without adjustment. Its versatility allows for installation on current line configurations or newly constructed frame or flexible cut-up lines.

With the FH Cross-Cut Halving Machine, there is no need for a pre-cutter, in addition, the machine has a direct drive design with no belts and easy maintenance.

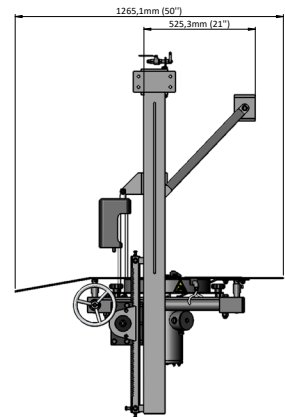
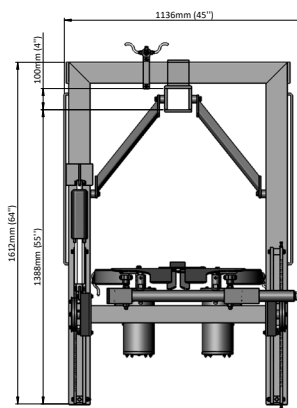
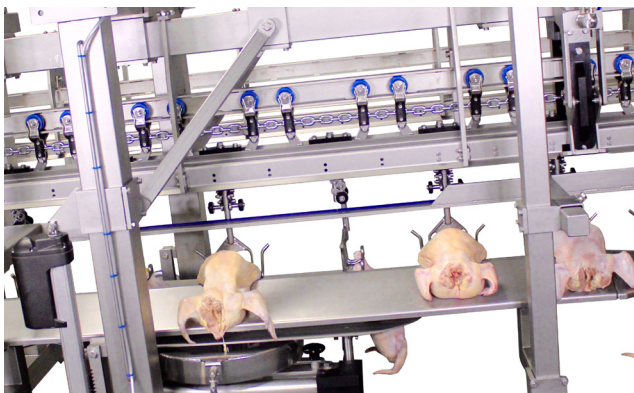
ADVANTAGES

- ✓ Allows for consistent and straight cuts
- ✓ Cut can be adjusted to help increase leg
- ✓ quarter yield
- ✓ Does not cut into keel tip
- ✓ 3 - 4 rib count on front half
- ✓ Eliminates the need for a pre-cutting machine
- ✓ Allows for easy adjustment and easy maintenance due to the simple construction
- ✓ Integrates easily into existing frame or flex cut-up system



FINAL PRODUCT

FH CROSS-CUT HALVING MACHINES



Foodmate US

221 Turner Blvd.
Ball Ground, Georgia 30107, U.S.A.
Phone: +1 678-819-5270 · Fax: +1 678-819-5273
info@foodmateusa.com | foodmateus.com

Foodmate B.V.

Einsteinstraat 26
3281 NJ Numansdorp
The Netherlands
Phone: +31-186630240 · Fax: +31-186630249
info@foodmate.nl | foodmate.nl

TECHNICAL SPECIFICATIONS

Frame and motor	Stainless steel
Motor	0,75 kW
Power Supply	380/480 V 3 phz 50/60

MACHINE DIMENSIONS

Length	1136 mm / 45"
Width	1265 mm / 50"
Height	1612 mm / 64"